

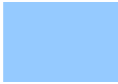





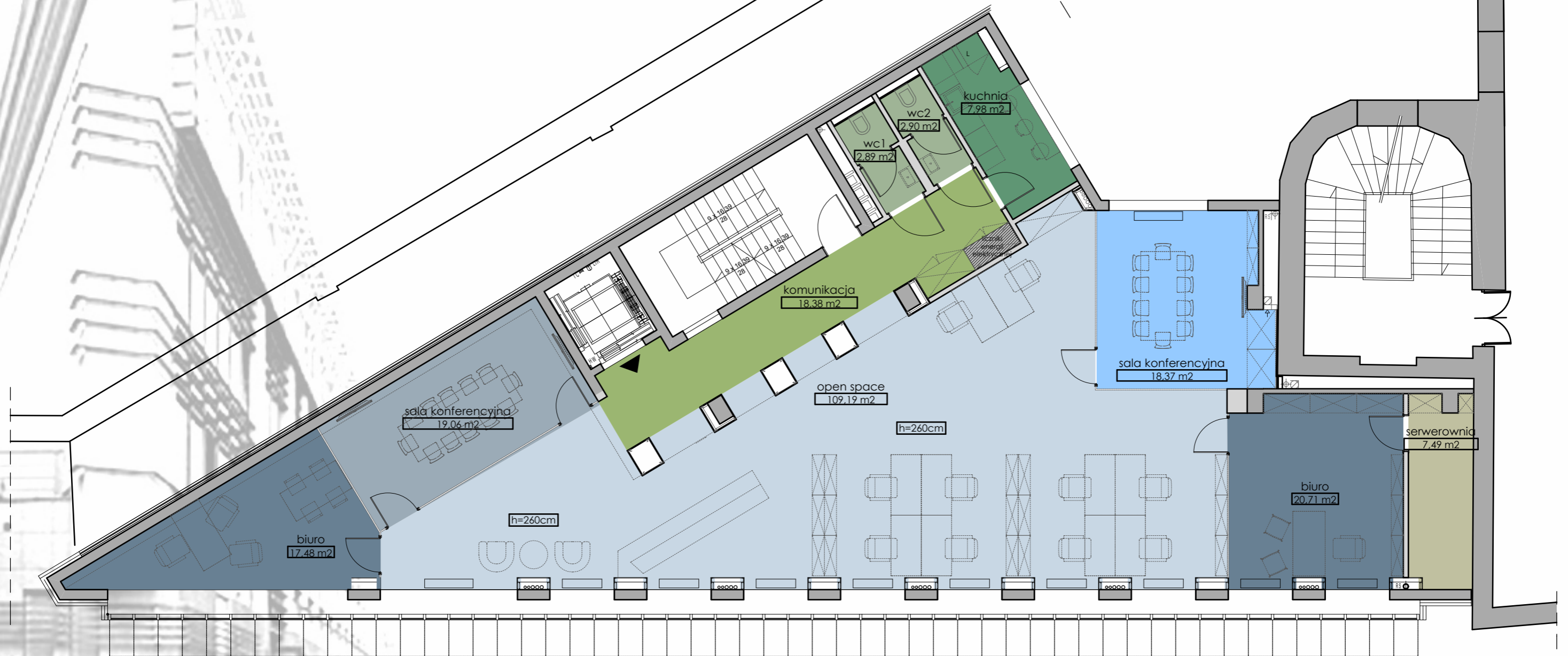
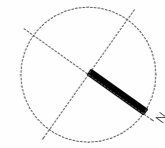


- | | | | |
|---|---------------------------|---|-------------|
|  | open space 8 osób |  | komunikacja |
|  | sala konferencyjna 10 os. |  | wc |
|  | sala konferencyjna 12 os. |  | kuchnia |
|  | pokój biurowy 1 osoba |  | serwerownia |



20 osób
230,20 m²